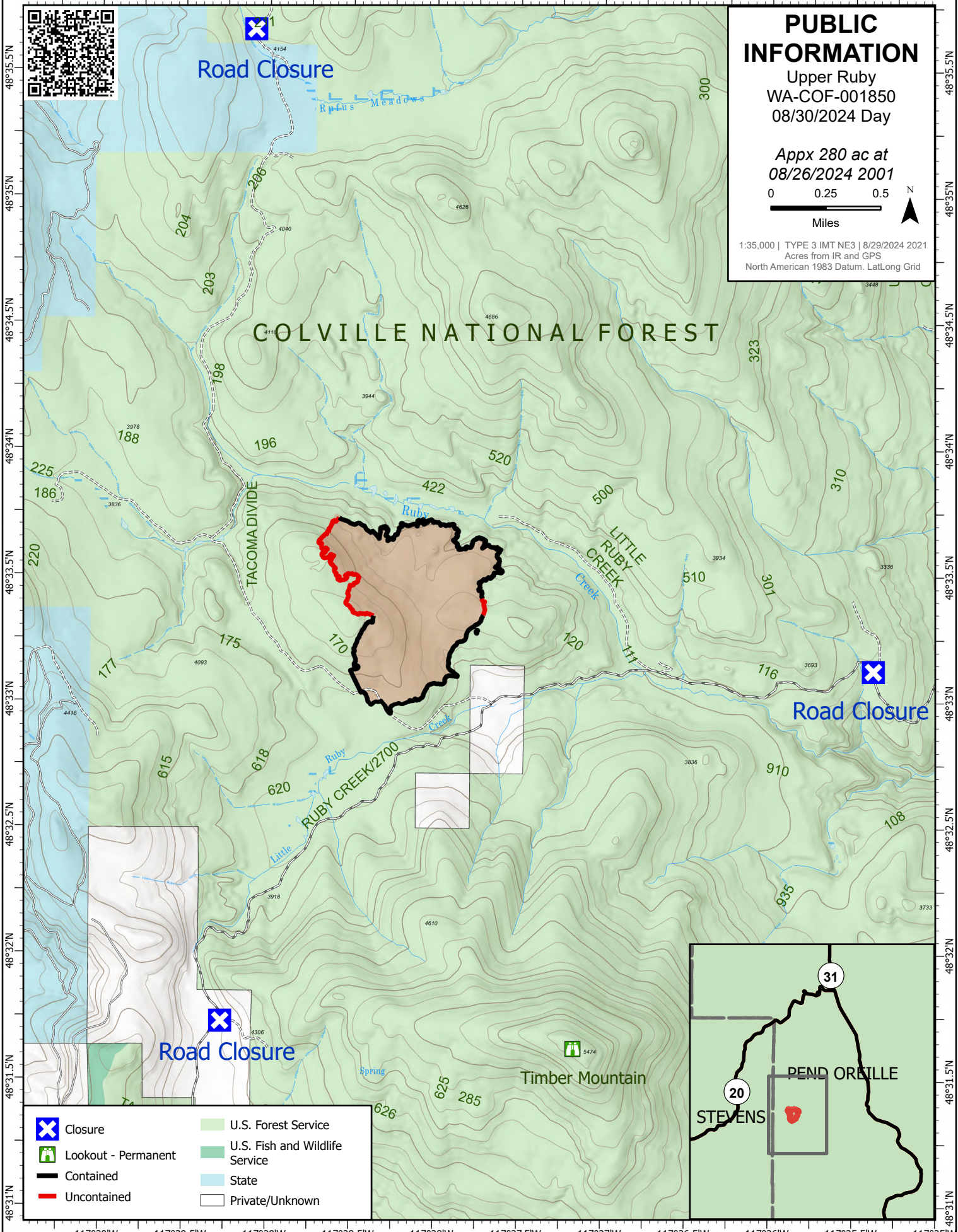


117°30'W 117°29.5'W 117°29'W 117°28.5'W 117°28'W 117°27.5'W 117°27'W 117°26.5'W 117°26'W 117°25.5'W



PUBLIC INFORMATION
 Upper Ruby
 WA-COF-001850
 08/30/2024 Day

Appx 280 ac at 08/26/2024 2001

0 0.25 0.5
 Miles

1:35,000 | TYPE 3 IMT NE3 | 8/29/2024 2021
 Acres from IR and GPS
 North American 1983 Datum, LatLong Grid



Road Closure

Road Closure

Road Closure

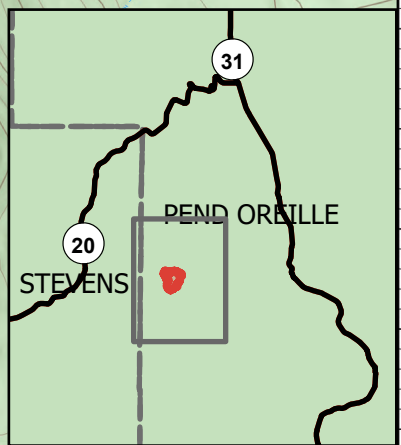
COLVILLE NATIONAL FOREST

TACOMA DIVIDE

LITTLE RUBY CREEK

RUBY CREEK/2700

Timber Mountain



- Closure
- Lookout - Permanent
- Contained
- Uncontained
- U.S. Forest Service
- U.S. Fish and Wildlife Service
- State
- Private/Unknown

117°30'W 117°29.5'W 117°29'W 117°28.5'W 117°28'W 117°27.5'W 117°27'W 117°26.5'W 117°26'W 117°25.5'W